

### Standard 'Weld-On' Safe Lock Option

#### Product Overview

The **102-Series Safe Lock** is a re-engineered version of the 101-Series Cover-Strap Safe Lock that was introduced in 1978 as the first weld-on lock installation of its kind.

The installation of this lock avoids any drilling threading or screws by simply welding the lock cover directly onto the door. Safe manufacturers and gun cabinet makers alike recognise and welcome the smooth operation and low cost this lock provides.



**102-WCL/R30 Safe Lock**

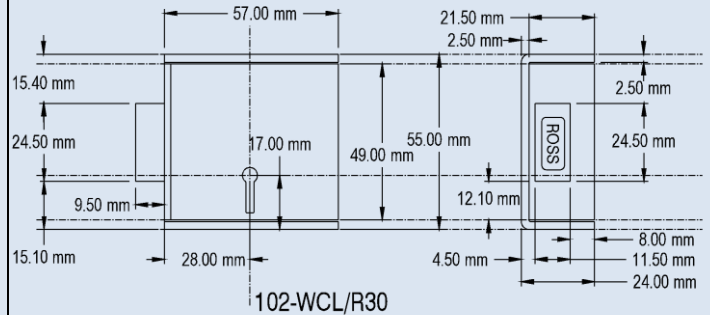
#### Product Benefits

- This high quality lock with its conventional pivot style levers, is manufactured with a steel gating stump riveted directly behind the stepped shoulder of the bolt-head.
- Together, this design provides resistance against a forced entry or jemmy attack.

#### Technical Specifications

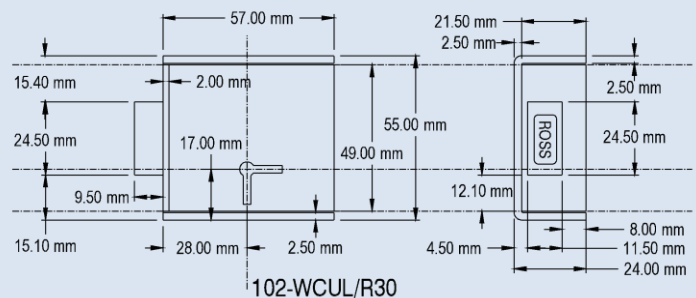
- (6) pick resistant levers.
- (46,000) possible keycode combinations.
- (2) single-bitted steel keys are provided.
- (10) keylengths are available.
- Keylengths are measured by the distance between the bitt-and-bow of the key.
- Keylengths start from the 30mm (R30) key through to the 180mm (R180) key.
- A keycode is read from the tip of the key to the ROSS embossed keybow.

#### Weld-On Cover Single Keyhole Option



**DIMENSIONAL DRAWING**

#### Weld-On Cover Dual Keyhole Option

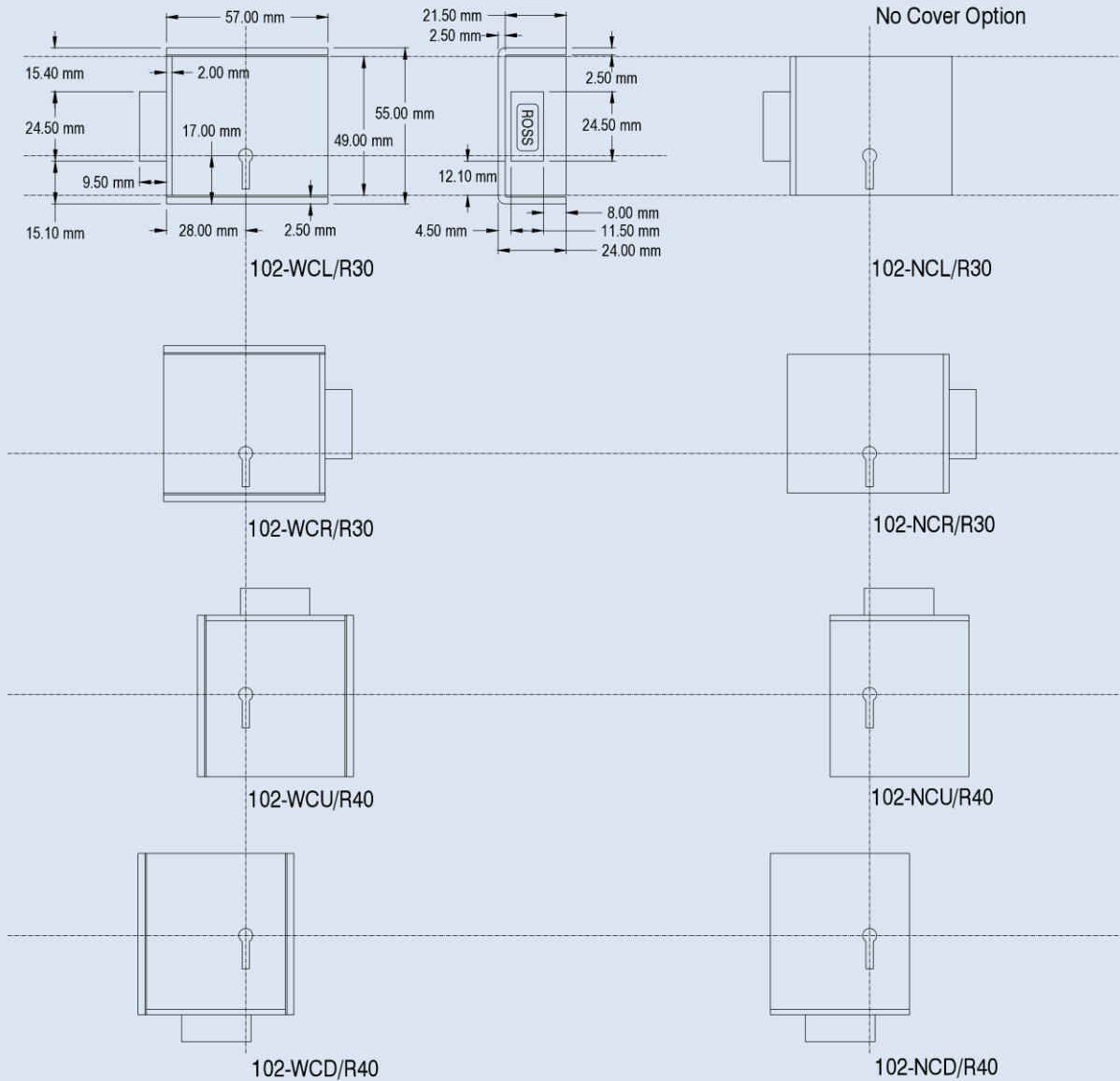


**DIMENSIONAL DRAWING**

**Single- Keyhole 'Weld-On' Handing Options**

**Weld-On Cover**

**Single Keyhole Options**



**102-WC\_** identifies this lock comes complete with 'WELD-ON' cover.

**102-NC\_** identifies this lock comes with no 'WELD-ON' cover.

**102-WCL** identifies the lock handing as being a LH bolt-throw complete with 'WELD-ON' cover.

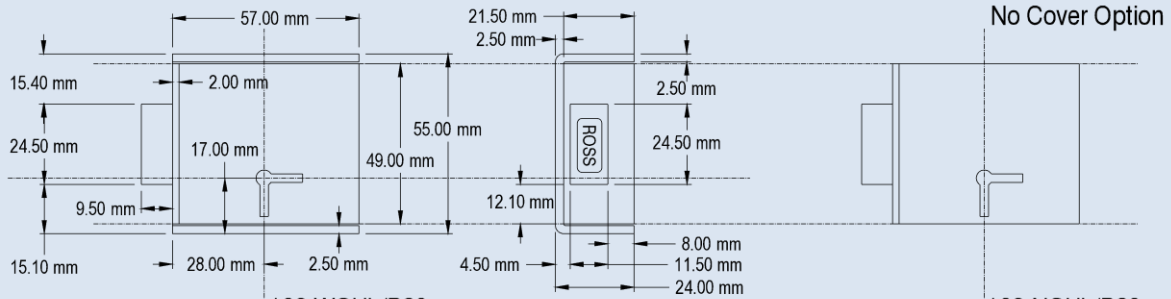
**102-NCL** identifies the lock handing as being a LH bolt-throw with no 'WELD-ON' cover.

**PRODUCT CODING STRUCTURE**

**Dual- Keyhole 'Weld-On' Handing Options**

**Weld-On Cover**

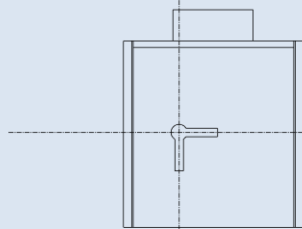
**Dual Keyhole Options**



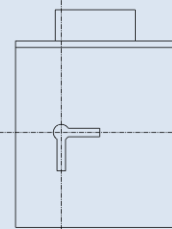
102-WCUL/R30

No Cover Option

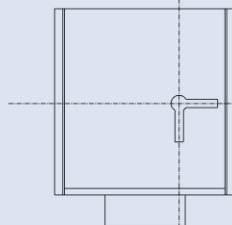
102-NCUL/R30



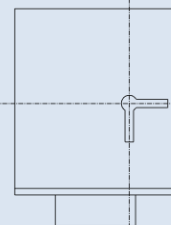
102-WCUR/R30



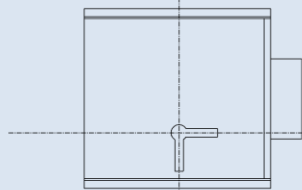
102-NCUR/R30



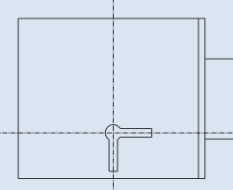
102-WCDL/R30



102-NCDL/R30



102-WCDR/R30



102-NCDR/R30

**102-WC\_** identifies this lock comes complete with 'WELD-ON' cover.

**102-NC\_** identifies this lock comes with no 'WELD-ON' cover.

**102-WCUL** identifies the lock handing as being a UP/LH bolt-throw complete with 'WELD-ON' cover.

**102-NCUL** identifies the lock handing as being a UP/LH bolt-throw with no 'WELD-ON' cover.

**PRODUCT CODING STRUCTURE**

## Supplementary Safe Lock Options

**Additional Lock Options include –**

- A 102-Series Anti-Drill Plate is hardened to 58Rc to a depth of 2.5mm.
- A 102-Series Key-Stop can be added to the lock to ensure that the key can only be removed from the lock once the bolt has been thrown to the locked position.
- A Key-Code tag can also be supplied with the lock to aid the registration/reorder process.
- Key ID Stamping options add support to the recognition and reorder process.

**Key Surcharge Considerations –**

- (2) keys are always included in the price of any keyed-to-differ 102-Series Safe Lock.
- R30 keys (30mm between-bitt-bow) of the key, is the default keylength supplied on LH/RH handed safe locks.
- R40 keys (40mm between-bitt-bow) of the key, is the default keylength supplied on UP/DN handed safe locks.
- R30, R40 and R50 keys are included in the price of all 102-Series Safe Locks.
- R75, R85, R100, R130, R150 and R180 keys attract a per key surcharge.

**Installation Options –**

- A sintered (Single-Bitt) Keyhole Insert can be purchased. Simply drill a 19mm hole through the steel plate door, countersink the inside surface to allow for a strengthened weld point and then dress-off and fit the lock.
- A diecast Keyhole Escutcheon can also be purchased. This offers a convenient solution to hiding the keyhole on the door.

**Component Purchase Options –**

- 102-Series (LH) WELD-ON Cover.
- 102-Series (RH) WELD-ON Cover.
- 102-Series Lock Case
- 102-Series Lock Cap (All Handings).
- 102-Series Dead-Bolt.
- 102-Series Lever Packs in packs of (10) : #1, #2, #3, #4, #5 & #6.
- 102-Series Key & Lever Kit.  
The kit includes a brass key gauge and laminated lever chart.

**Keyed-Alike Options –**

- (2) only keys are provided in the price for any keyed-alike lock set requested.
- Additional key requirements to a keyed-alike lock set will need to be purchased separately.
- A keyed-alike set can be made up of (1) or a number of different handings.
- The add-on lock options apply to all or any locks within the keyed-alike lock set request.

**Keyed-Alike lock set request examples–**

- (1) x 102-WCL/KA2 is (2) locks keyed to the same key-code (PAIR).
- (1) x 102-WCL/KA3 is (3) locks keyed to the same key-code (TRIPLE).
- (1) x 102-WCL/KAn is (n) locks keyed to the same key-code.

**Masterkeying Options –**

- A keyed-to-differ lock set can also be masterkeyed. A masterkeying surcharge applies to each lock in the masterkey lock set and a masterkey surcharge also applies.