

NEW INSTALLATION GUIDE - Flush Fit

CODELOCKS HEADQUARTERS

Tel: +44 (0) 1635 239645
Fax: +44 (0) 1635 239644
sales@codelocks.co.uk
www.codelocks.co.uk

Helpline, service & spares
Freephone: 0800 393 405

CODELOCKS INC US

Tel: +1 714 979 2900
Fax: +1 714 979 2902
sales@codelocks.us
www.codelocks.us

Helpline, service & spares
Toll free: 1.877.codelock

CODELOCKS (Australia) PTY LTD

Tel: +61 2 9882 1009
Fax: +61 2 9882 6030
sales@codelocks.com.au
www.codelocks.com.au

Helpline, service & spares
Toll free: 1800 052 131

II-KL90-v1:0415

A For sheet metal doors

- 1 Using the surface fit trim plate ② as a guide, draw around the inside edge of the trim plate to show the area to be cut out.
IMPORTANT NOTE: Before cutting, ensure the position of the lock will allow the selected cam to engage with the frame.
- 2 Cut out the area inside the line and file the edges of the hole to get rid of any sharp burrs.
- 3 Fit the lock through the hole and slide the surface fit trim plate ② over the projecting lock from the inside, secure in place with the flush fit fixing plate ③.
- 4 Select and fit appropriate spindle and cam with correct length fixing bolt.
- 5 Before closing the door check the operation of the lock with the Master and User Code. Now check that the cam engages with the frame without bind or too much free play.
- 6 If not changed already, CHANGE THE FACTORY SET MASTER AND USER CODES.

B For wooden doors

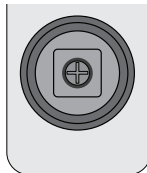
- 1 Using the surface fit trim plate ② as a guide, draw around the inside edge of the trim plate to show the area to be cut out.
IMPORTANT NOTE: Before cutting, ensure the position of the lock will allow the selected cam to engage with the frame.
- 2 Cut out the area inside the line and sand the edges of the hole to get rid of splinters. If cutting all the way through the door, continue installation from step 3 to 6 from New Installation A for sheet metal doors.
- 3 For thicker doors where a rebate is desired, the rebate will need to be 16mm ($\frac{5}{8}$ ") deep to accommodate the lock. After cutting out the rebate, the fixing holes and spindle hole will need to be marked and drilled, using the flush fit fixing plate ③ as a guide.
- 4 Drill all three fixing holes.
- 5 Fit lock to door using appropriate length fixing bolts.

- 6 Select and fit appropriate spindle and cam with correct length fixing bolt.
- 7 Before closing the door check the operation of the lock with the Master and User Code. Now check that the

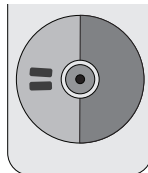
- 8 If not changed already, CHANGE THE FACTORY SET MASTER AND USER CODES.

SPECIAL NOTE

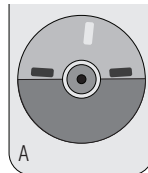
Your NANO90 is supplied with a handle that turns 90 degrees from the locked position either clockwise or anticlockwise. If you need to rotate the handle through 180 degrees, follow these steps.



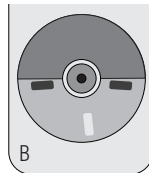
Step 1
Remove the handle by unscrewing the small Phillips head screw at the bottom of the spindle hole from the reverse of the lock.



Step 2
Lift off the handle to expose the stop plate, shown on the right hand side of the handle recess.



Step 3
Move the stop plate to position A) to rotate the handle 180 degrees clockwise, and position B) to rotate the handle 180 degrees anticlockwise.



Installation
Instructions

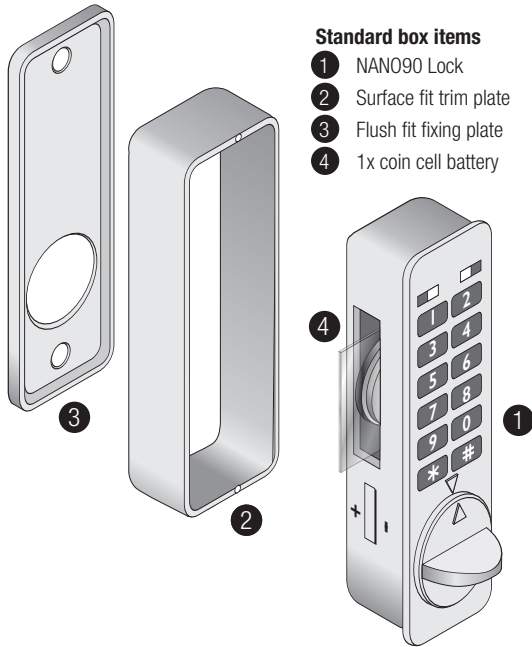
Kit·Lock
Coded Locker Solutions

NANO90

Please read carefully:

- Before installing the lock, familiarise yourself with the operation and programming. Remove the flush fit fixing plate ③ and slide off the surface fit trim plate ②. Pull out the clear plastic battery isolator, the lock is now active, push the battery cover into place.
NOTE: Battery cover not required if trim plate fitted ②.
- The handle will not turn until you enter the factory default Master Code 11335577 or the default User Code 2244.
- Please see Programming Instructions to set your new Master and User Codes and to set different functions if required.

Box items



Standard box items

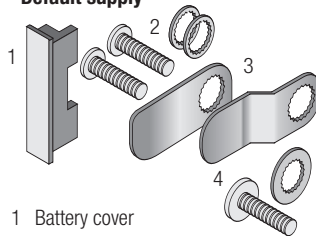
- ① NANO90 Lock
- ② Surface fit trim plate
- ③ Flush fit fixing plate
- ④ 1x coin cell battery

A Replace existing cam lock

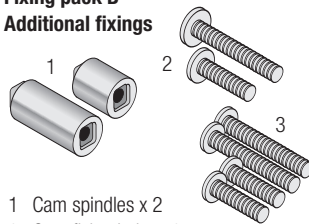
- 1 Remove existing cam lock.
- 2 Using the flush fit fixing plate ③ as a guide, place the 17mm ($11/16$ "") hole over the hole left after removing the cam lock, and mark the upper and lower fixing holes.
- 3 Drill the two 5mm ($3/16$ "") fixing holes.
- 4 Ensure the surface fit trim plate ② is in place, then fit lock to the door using appropriate length fixing bolts.
- 5 Select and fit appropriate spindle and cam with correct length fixing bolt.
- 6 Before closing the door check the operation of the lock with the Master and User Code. Now check that the cam engages with the frame without bind or too much free play.
- 7 If not changed already, CHANGE THE FACTORY SET MASTER AND USER CODES.

B New Installation

- 1 Place the flush fit fixing plate ③ on the door and mark upper and lower 5mm ($3/16$ "") fixing holes and 17mm ($11/16$ "") spindle hole.
- IMPORTANT NOTE:**
Before drilling the fixing holes, ensure the position of the lock will allow the selected cam to engage with the frame.
- 2 Drill all three fixing holes.
 - 3 Continue installation from step 4 to 7 from the Installation Guide section A.

Fixing pack A
Default supply

- 1 Battery cover
- 2 Upper and lower fixing bolts and star washers x 2
- 3 Cams x 2
- 4 Cam fixing bolt

Fixing pack B
Additional fixings

- 1 Cam spindles x 2
- 2 Cam fixing bolts x 2
- 3 Upper and lower fixing bolts x 4